

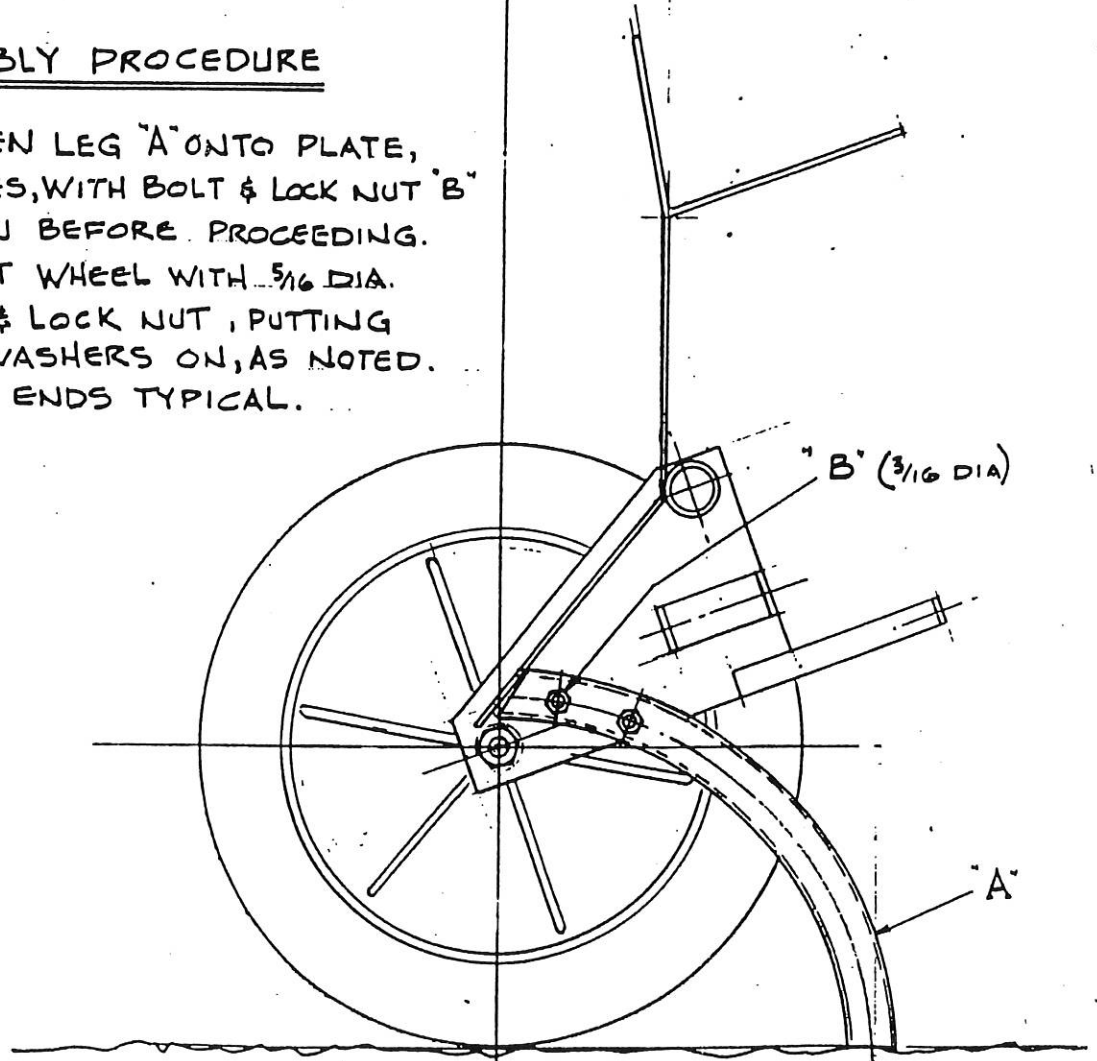
OUTSIDE

INSTALL (2) FLAT
WASHERS HERE

PLAN VIEW

ASSEMBLY PROCEDURE

1. FASTEN LEG "A" ONTO PLATE,
(2) PLACES, WITH BOLT & LOCK NUT "B"
TIGHTEN BEFORE PROCEEDING.
2. MOUNT WHEEL WITH $\frac{5}{16}$ DIA.
BOLT & LOCK NUT, PUTTING
FLAT WASHERS ON, AS NOTED.
3. BOTH ENDS TYPICAL.



ELEVATION - INSIDE VIEW LOOKING OUT